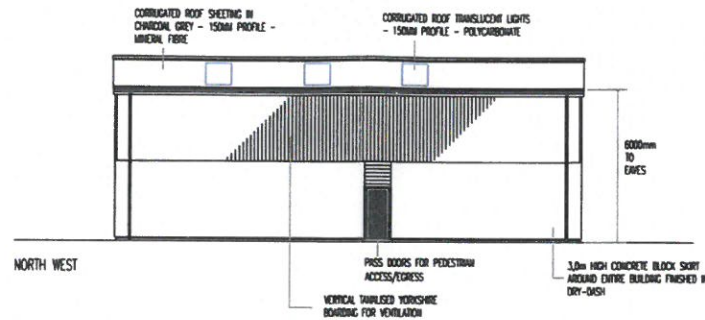
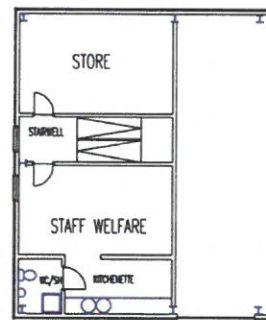


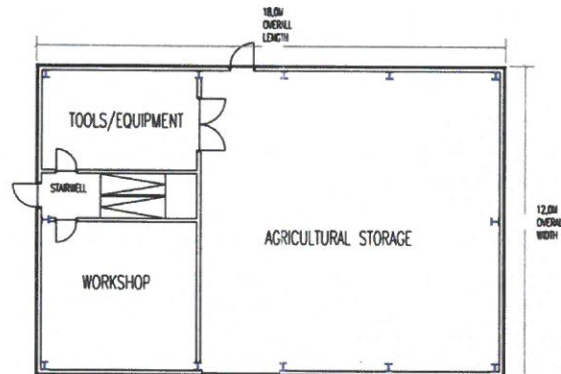
NORTH EAST



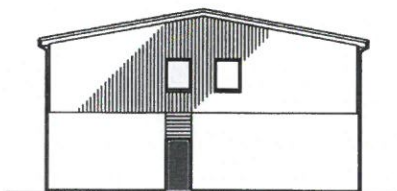
NORTH WEST



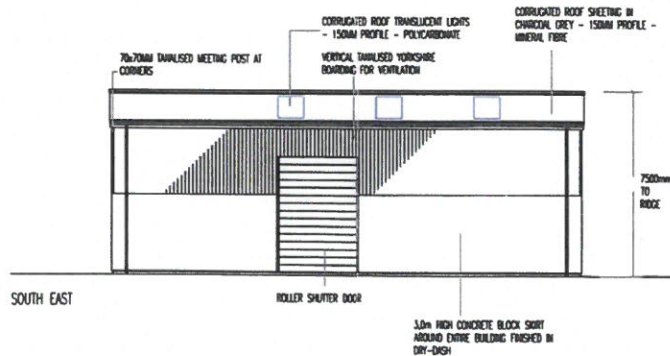
GENERAL ARRANGEMENT  
mezzanine level



GENERAL ARRANGEMENT  
ground floor

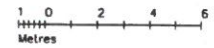
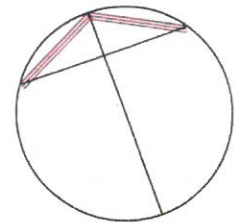


SOUTH WEST



SOUTH EAST

Scottish Borders Council  
Town & Country Planning (Scotland) Act  
**REFUSED**  
  
- 6 MAR 2017  
  
Planning & Economic  
Development Department



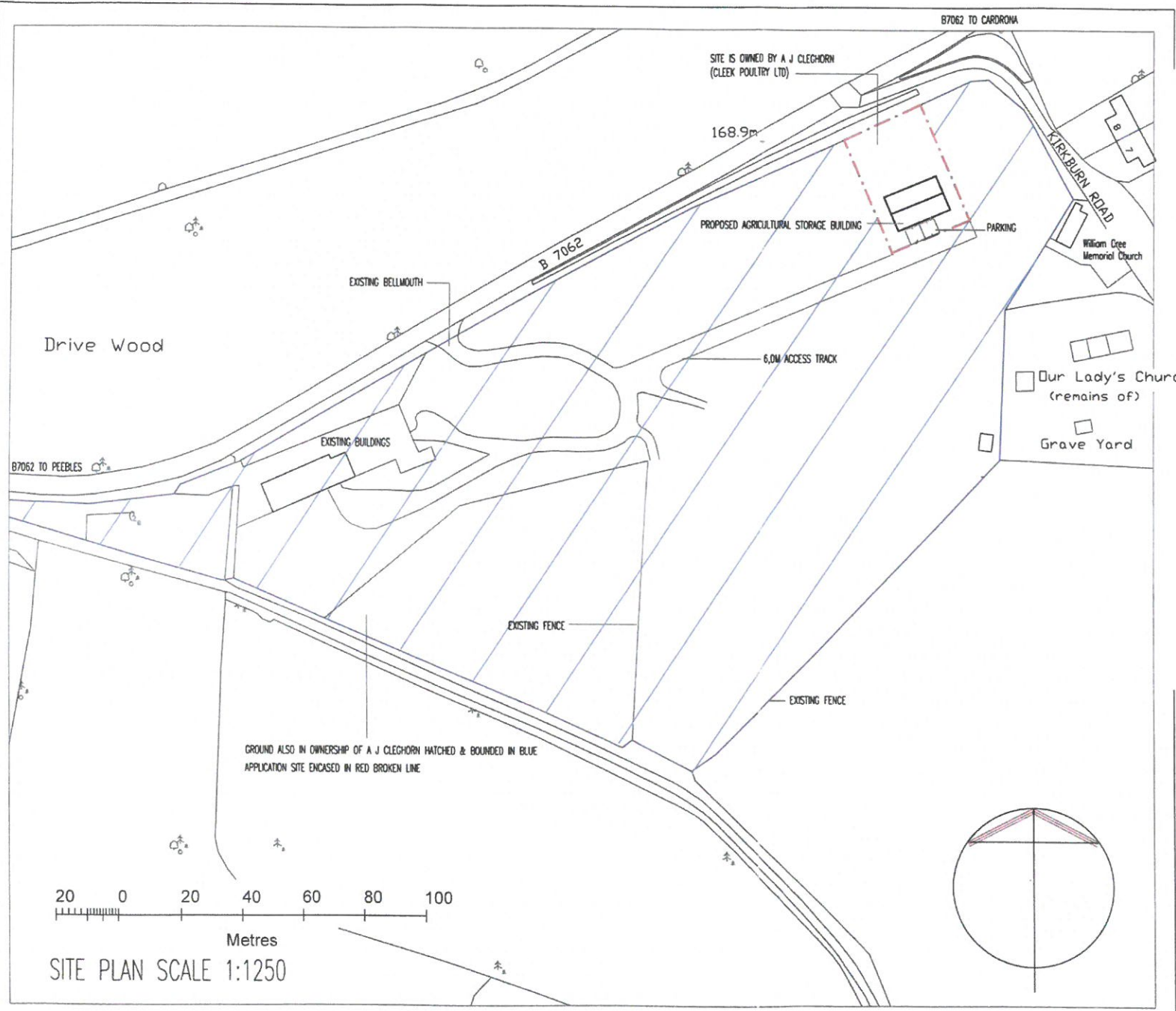
REVISIONS	
A	
B	
C	
D	
E	
F	

PRINTING NOTE A3 PAPER AT 10:1

SCALE 1:200	NOV 2016
drg 196 72 REVISION --	GENERAL ARRANGEMENT

PROPOSED AGRICULTURAL STORAGE SHED WITH WELFARE ACCOMMODATION  
KIRKBURN, CARDRONA, PEEBLES, EH45 9HU  
Cleek Poultry Ltd

ALL DRAWINGS ON THIS SHEET  
AT 1:200



Scottish Borders Council  
 Town & Country Planning (Scotland) Act  
**REFUSED**  
 - 6 MAR 2017  
 Planning & Economic  
 Development Department

AMENDMENTS	
A	
B	
C	
D	
E	
F	

PRINTING NOTE A3 PAPER SCALE 20:1

SCALE 1:1250 DECEMBER 2016

drg 196 73C  
 REVISION -- SITE PLAN

PROPOSED AGRICULTURAL STORAGE SHED WITH  
 WELFARE ACCOMMODATION  
 KIRKBURN, CARDRONA, PEEBLES, EH45 9HU  
 Cleek Poultry Ltd